

MINISTRY OF EDUCATION, HERITAGE & ARTS 2021

YEAR 13 GEOGRAPHY WORKSHEET 6

Note: Use your Geography Activity Book to write your answers.

HYDROLOGY – Groundwater and surface water

(a) Definitions Define any four of the following:

- | | | |
|------------------------|-------------------------|------------------|
| (i) aquifer | (ii) water table | |
| (iii) confined aquifer | (iv) unconfined aquifer | |
| (v) cone of depression | (vi) artesian well | (4 marks) |

() _____

() _____

() _____

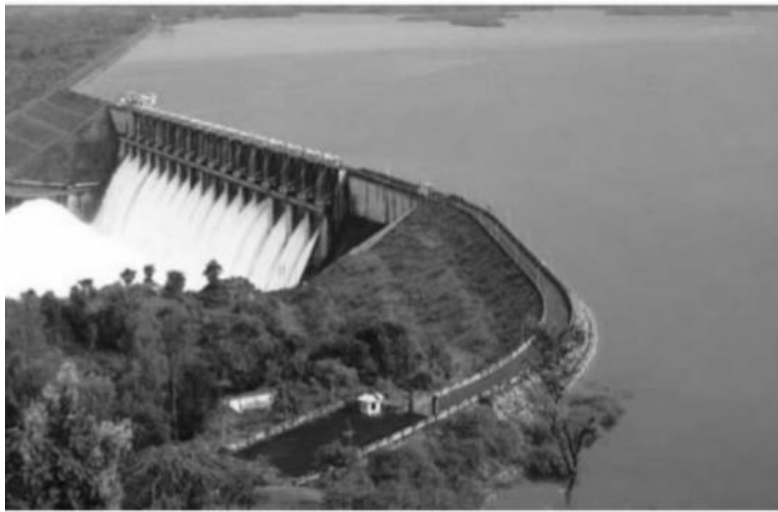
() _____

(b) Resource Interpretation

For each picture:

- Identify the method of surface water storage **(2 marks)**
- State an advantage and a disadvantage of the identified surface water storage method **(4 marks)**

Picture A



Source: <https://www.slideshare.net>

Picture B



Source: [Source: https://www.orissapost.com](https://www.orissapost.com)